

## Questionnaire on sustainability in your neighbourhood, district or city

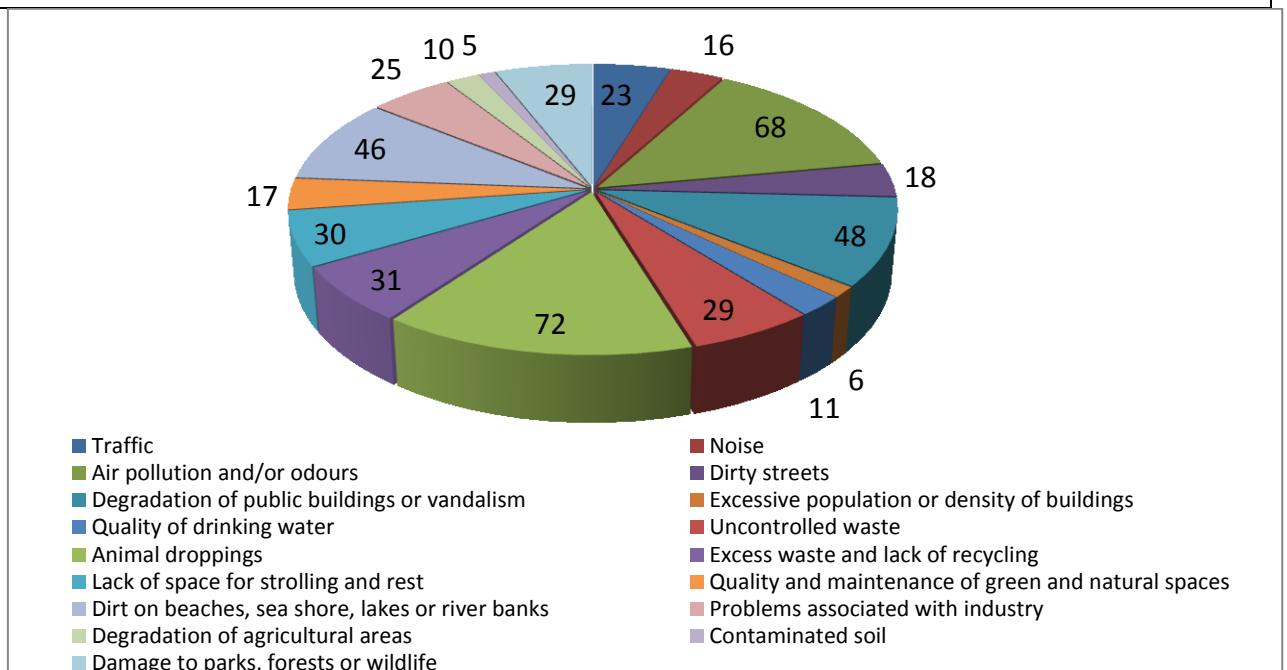
District and/or city where you live **Jonava (Lithuania)**

**Number of respondents – 145.**

### I. ENVIRONMENTAL PROTECTION

Which do you think are the **top five** local environmental **problems**?

	number	percent
Traffic	33	23
Noise	23	16
Air pollution and/or odours	99	68
Dirty streets	26	18
Degradation of public buildings or vandalism	69	48
Excessive population or density of buildings	9	6
Quality of drinking water	16	11
Uncontrolled waste	42	29
Animal droppings	105	72
Excess waste and lack of recycling	45	31
Lack of space for strolling and rest	43	30
Quality and maintenance of green and natural spaces	24	17
Dirt on beaches, sea shore, lakes or river banks	66	46
Problems associated with industry	36	25
Degradation of agricultural areas	14	10
Contaminated soil	7	5
Damage to parks, forests or wildlife	42	29
Other:		



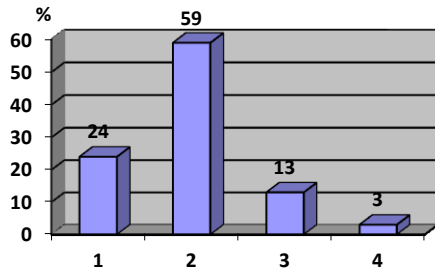
How often do you do the following conservation measures?

1-Always 2-Often 3-Rarely 4-Never (values in percent)

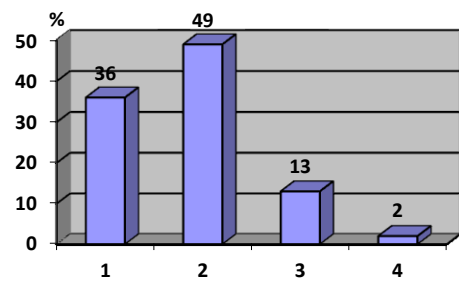
<u>Energy:</u>	<b>1</b>	<b>2</b>	<b>3</b>	<b>4</b>
I avoid leaving lights on unnecessarily	24	59	13	3
I unplug appliances when I do not use them	36	49	13	2
I use low consume light bulbs I use solar power	33	43	18	6
In summer I use moderately the air conditioning	35	19	19	27
In winter I use moderately the heating	14	26	32	28
<u>Water</u>	<b>1</b>	<b>2</b>	<b>3</b>	<b>4</b>
I have a short shower instead of a bath	59	32	7	3
I use saving devices	6	19	32	43
I turn off the tap while brushing my teeth, washing dishes, etc.	31	30	26	13
I reuse water	1	16	19	64
<u>Mobility</u>	<b>1</b>	<b>2</b>	<b>3</b>	<b>4</b>
I walk	19	67	14	0
I ride a bike, roller skate or skateboard	9	32	43	16
I go by car	8	49	32	11
I use public transport	2	17	61	20
I share with others the car	21	41	31	8
<u>Recycling, waste and consumption</u>	<b>1</b>	<b>2</b>	<b>3</b>	<b>4</b>
I throw waste in containers	83	16	0	1
I do selective separation of waste at home (glass, paper, plastics, batteries, etc)	8	19	30	43
I use recycled paper and/or buy recycled items in flea markets	4	19	49	28
I avoid buying packaged products	3	8	48	41
I take bags or a basket with me to avoid consumption of plastic bags	34	46	14	6
I buy organic products that do not deplete resources	3	32	59	6
<u>Environmental Education</u>	<b>1</b>	<b>2</b>	<b>3</b>	<b>4</b>
I am informed on environmental issues	20	39	34	7
I assume the behaviour to protect Nature	48	45	6	1
I am a member of a nature, hiking or environmentalist association	3	3	12	82
I tell the municipality if I see environmental aggressions or problems	3	1	23	72

## Energy:

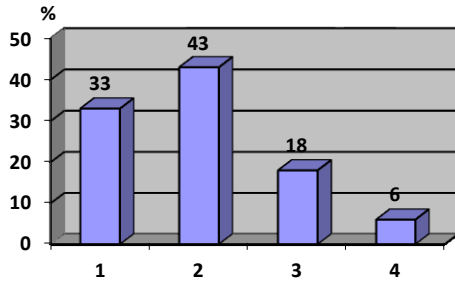
I avoid leaving lights on unnecessarily



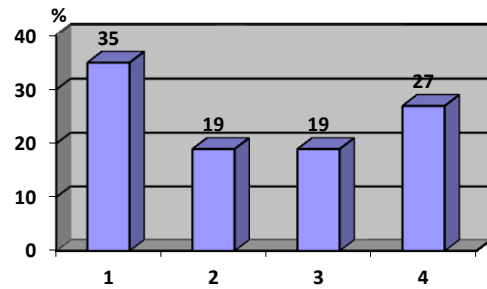
I unplug appliances when I do not use them



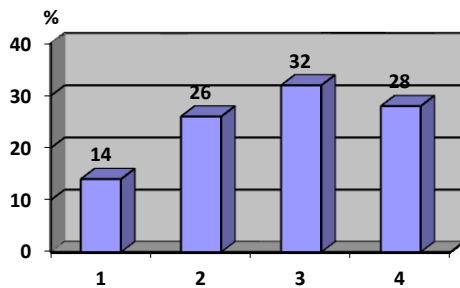
I use low consume light bulbs I use solar power



In summer I use moderately the air conditioning

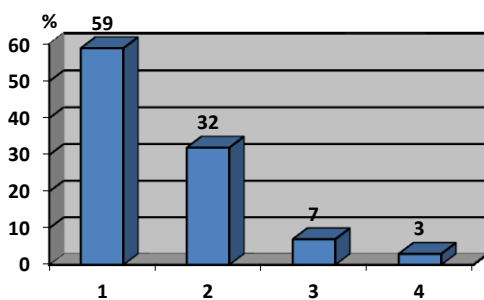


In winter I use moderately the heating

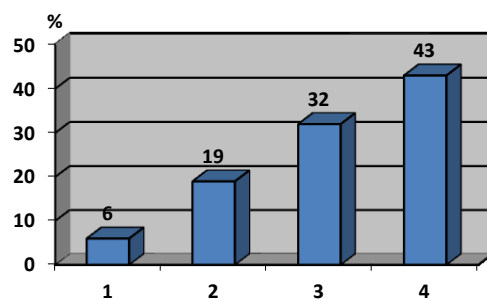


## Water

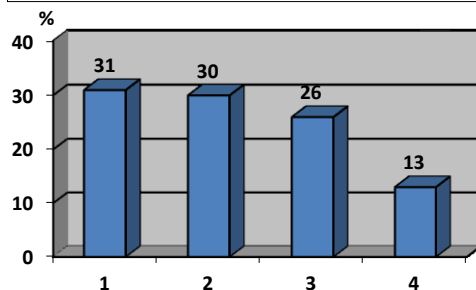
I have a short shower instead of a bath



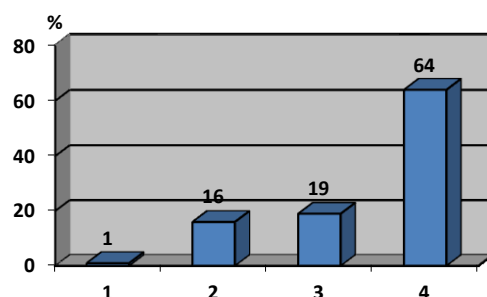
I use saving devices



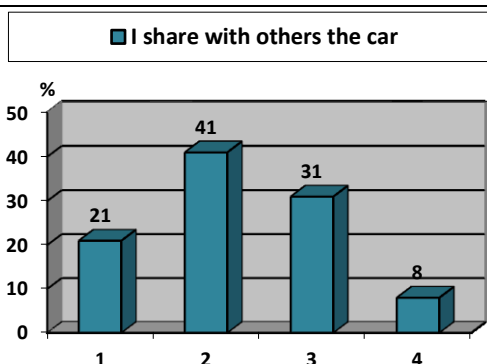
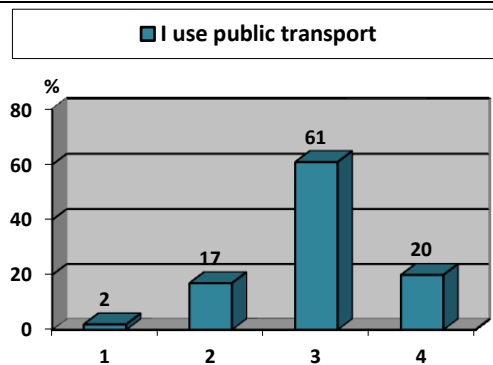
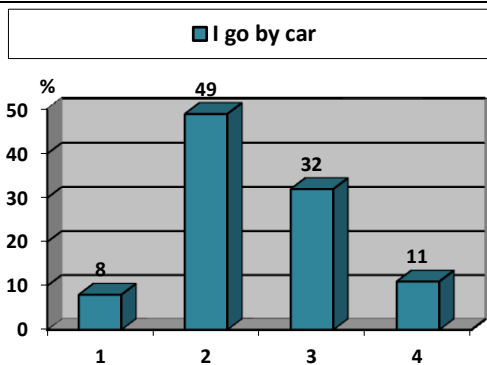
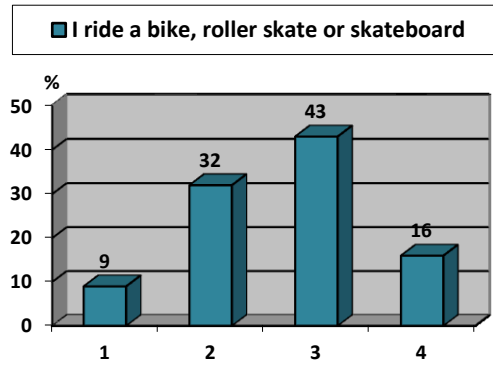
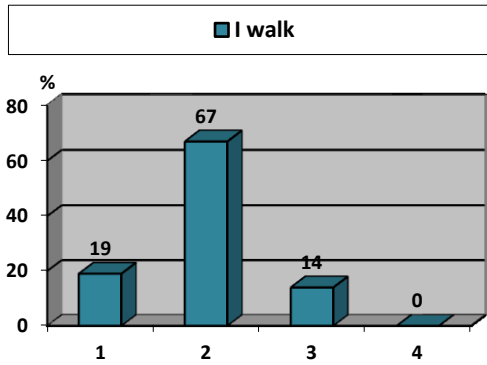
I turn off the tap while brushing my teeth, washing dishes, etc.



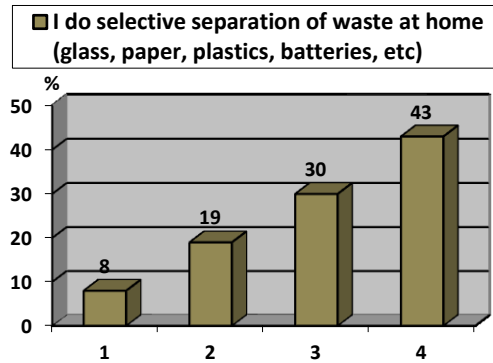
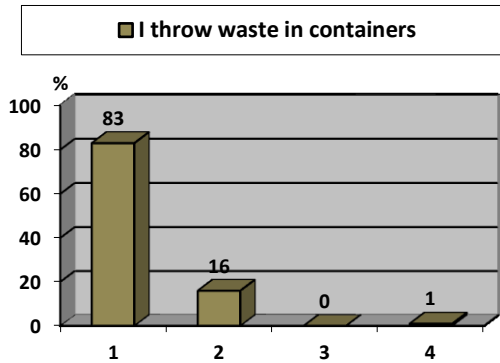
I reuse water

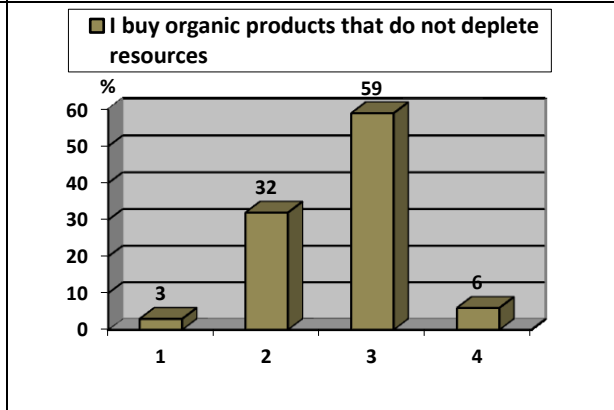
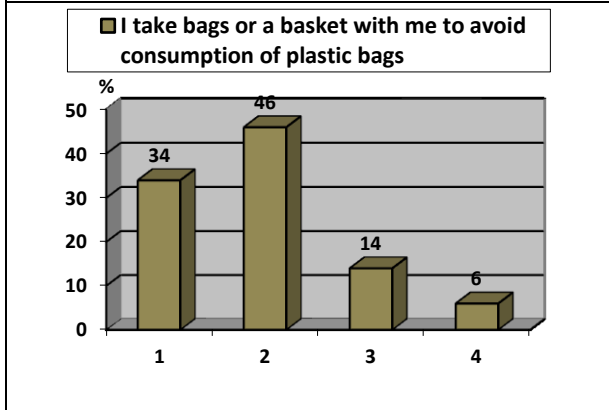
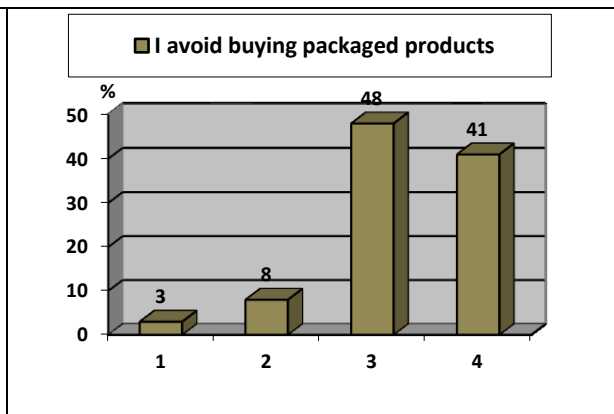
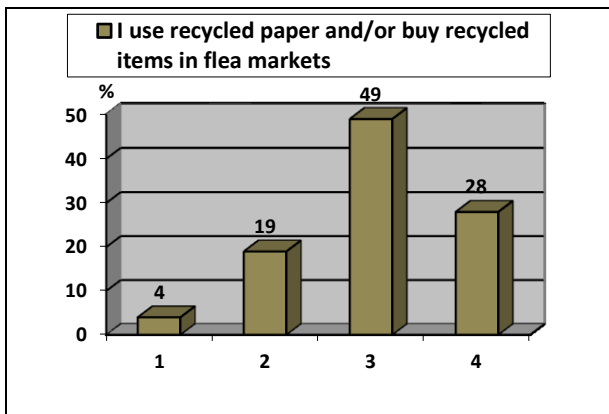


## Mobility

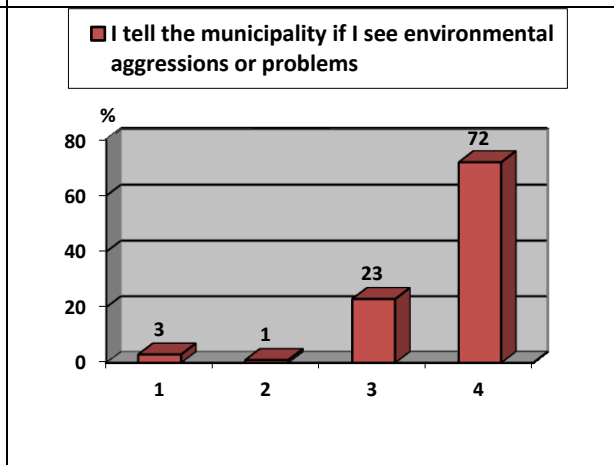
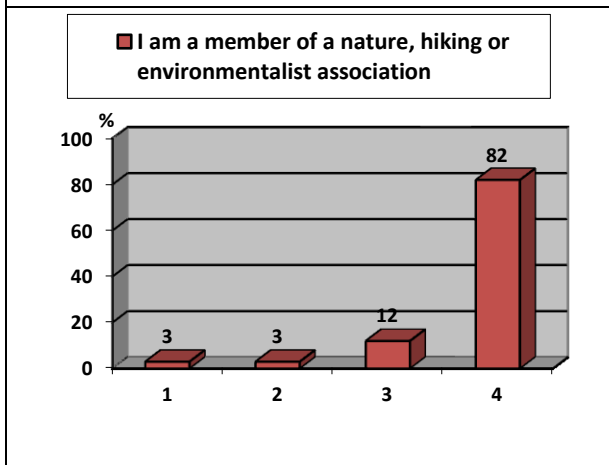
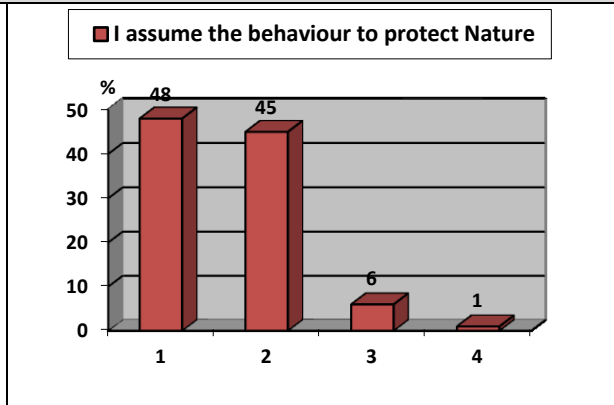
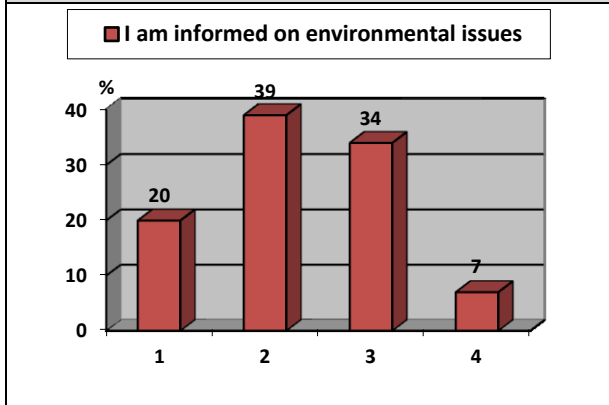


## Recycling, waste and consumption





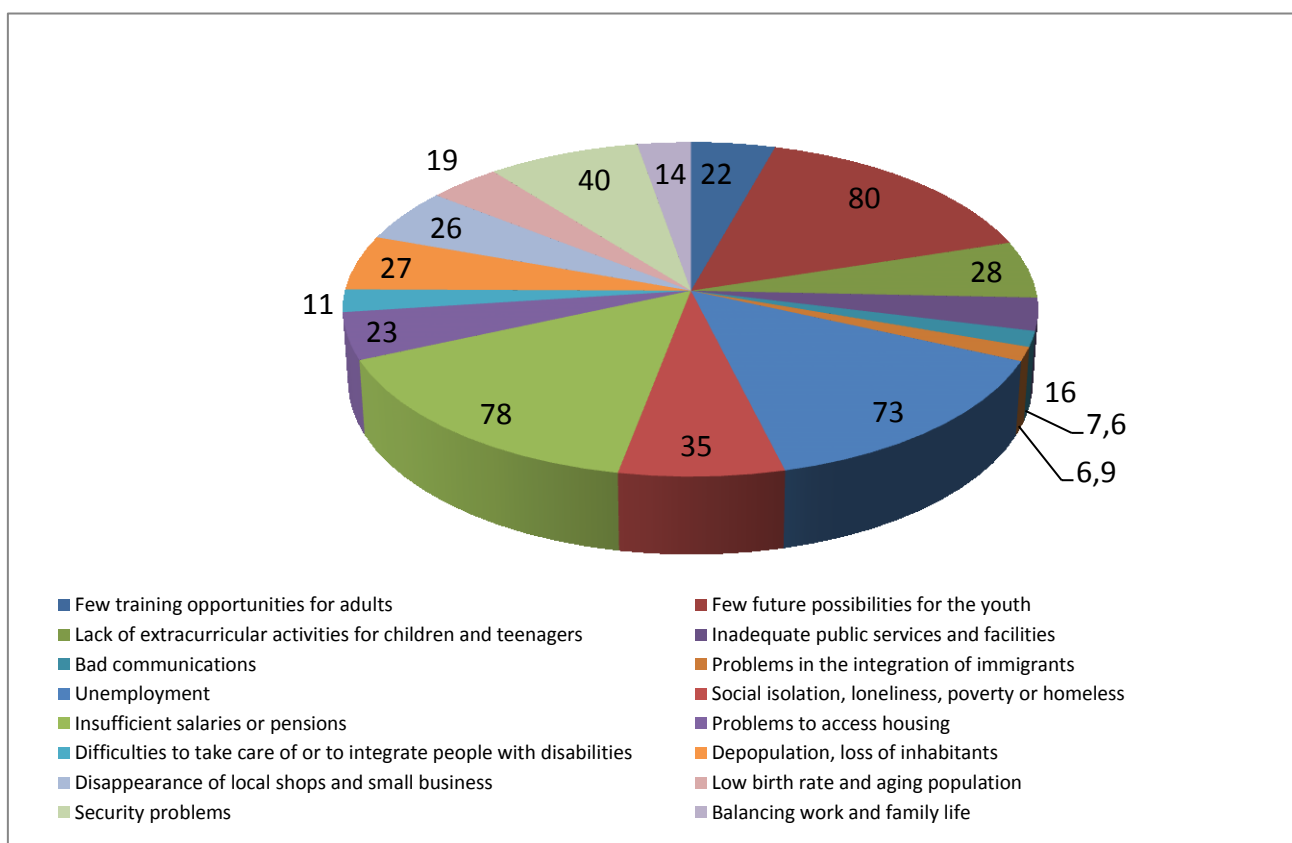
## Environmental Education



## II. SOCIO-ECONOMIC AREA

Which do you think are the **five** most important socio-economic **problems** of your municipality?

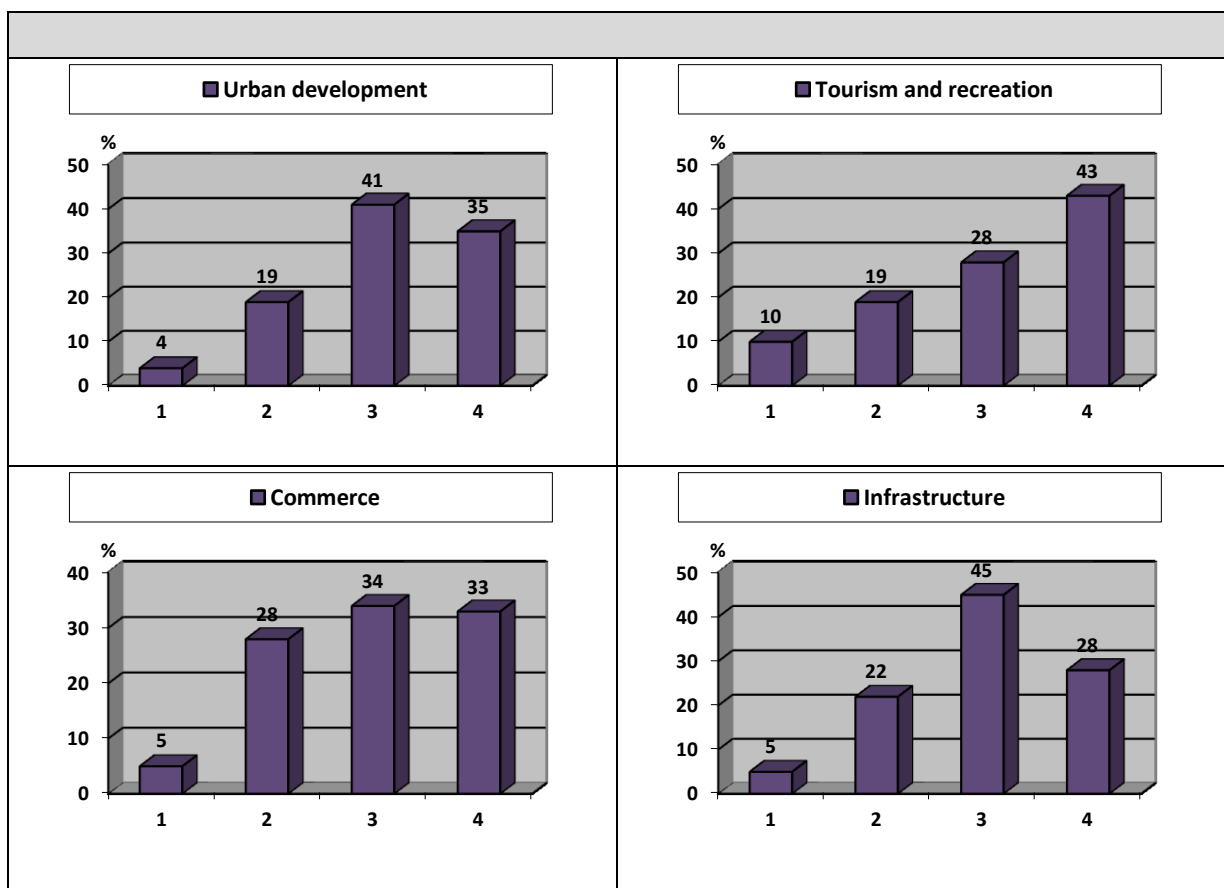
	number	percent
Few training opportunities for adults	32	22
Few future possibilities for the youth	116	80
Lack of extracurricular activities for children and teenagers	41	28
Inadequate public services and facilities	23	16
Bad communications	11	7,6
Problems in the integration of immigrants	10	6,9
Unemployment	106	73
Social isolation, loneliness, poverty or homeless	51	35
Insufficient salaries or pensions	113	78
Problems to access housing	34	23
Difficulties to take care of or to integrate people with disabilities	16	11
Depopulation, loss of inhabitants	39	27
Disappearance of local shops and small business	37	26
Low birth rate and aging population	27	19
Security problems	58	40
Balancing work and family life	21	14
Other ...		

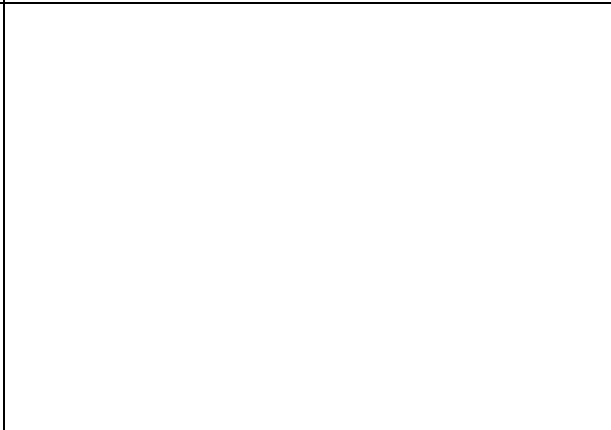
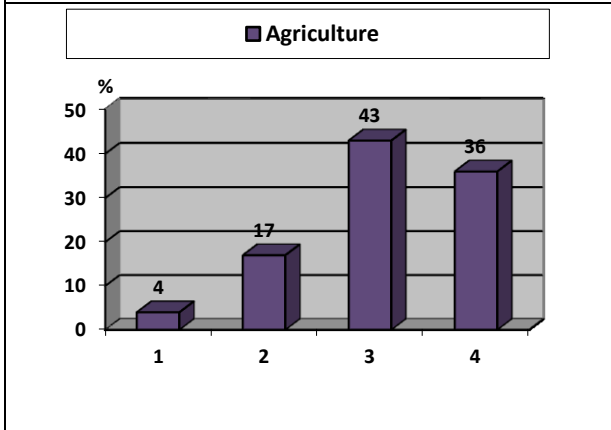
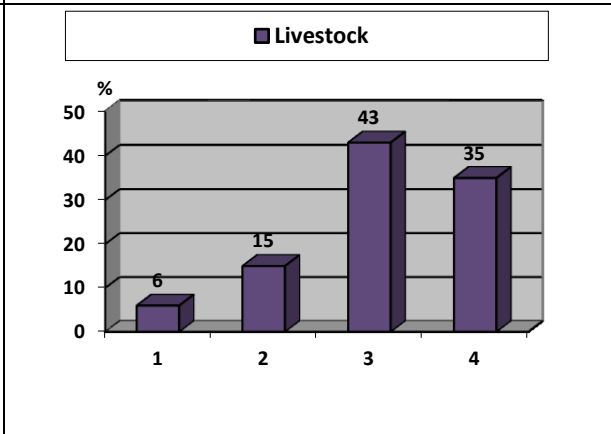
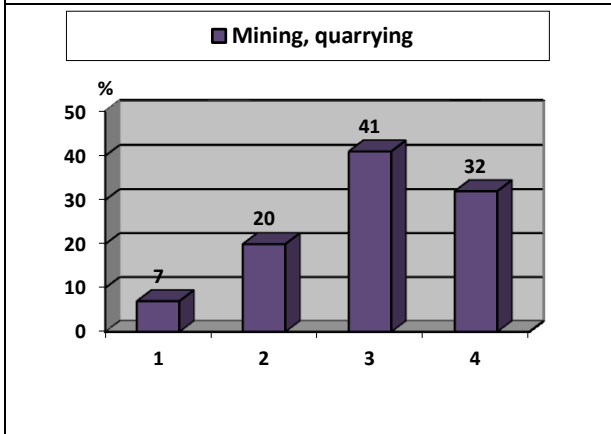
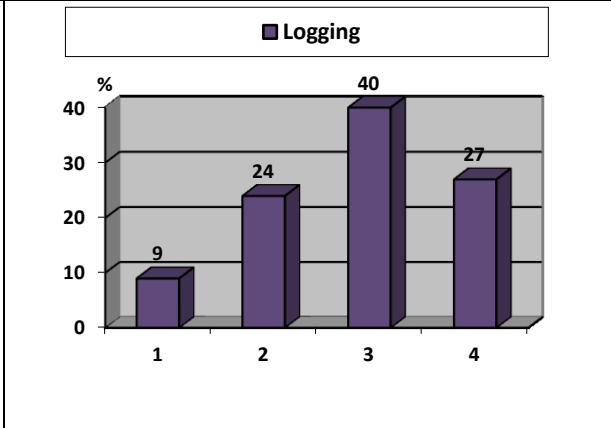
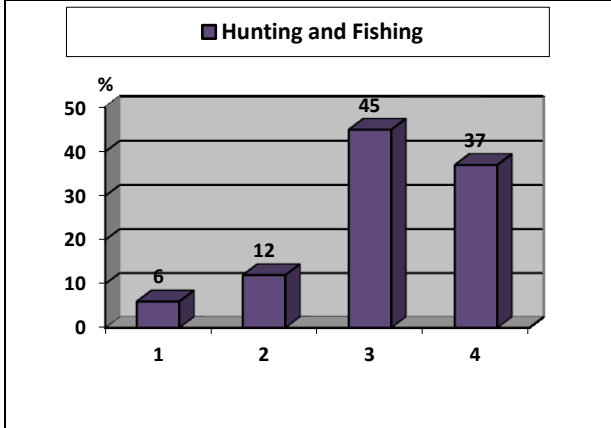
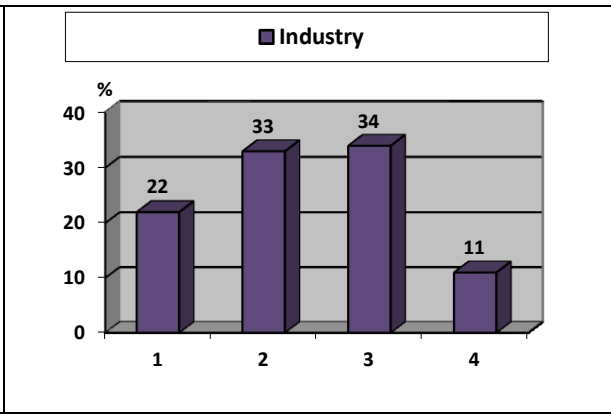
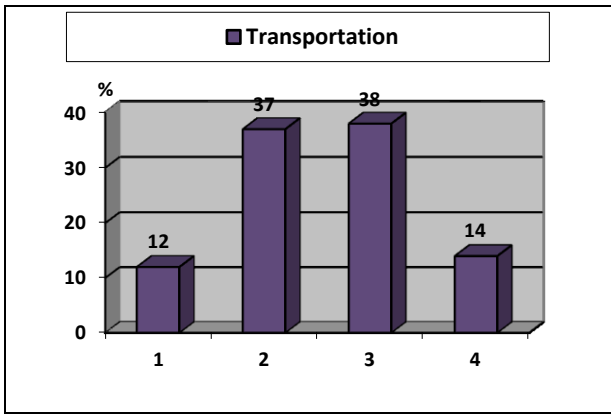


To what extent do you think the environment of your town is affected **negatively** by the development of the following economic activities?

1-Very much    2-Much    3-A little    4-None    (values in percent)

	1	2	3	4
Urban development	4	19	41	35
Tourism and recreation	10	19	28	43
Commerce	5	28	34	33
Infrastructure	5	22	45	28
Transportation	12	37	38	14
Industry	22	33	34	11
Hunting and Fishing	6	12	45	37
Logging	9	24	40	27
Mining, quarrying	7	20	41	32
Livestock	6	15	43	35
Agriculture	4	17	43	36



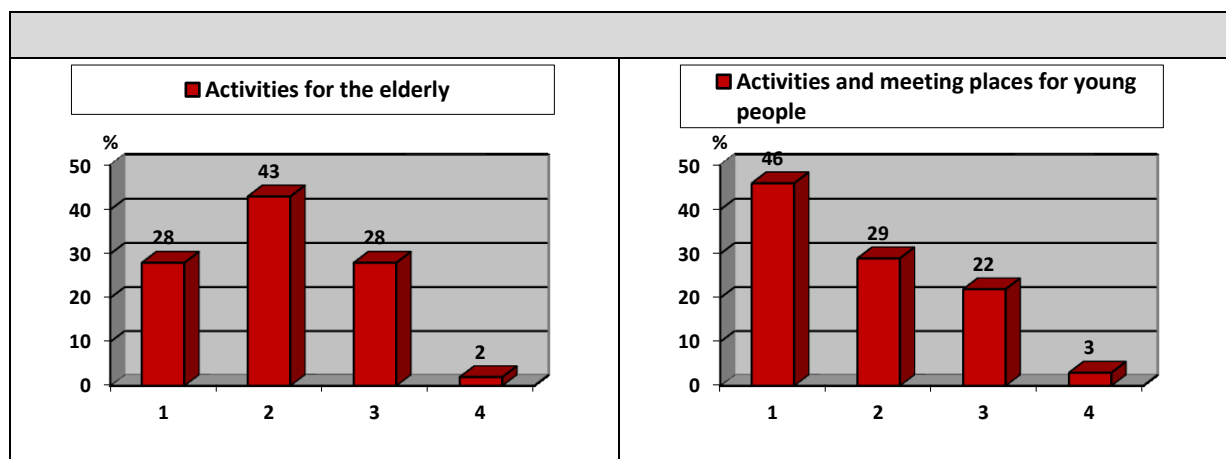


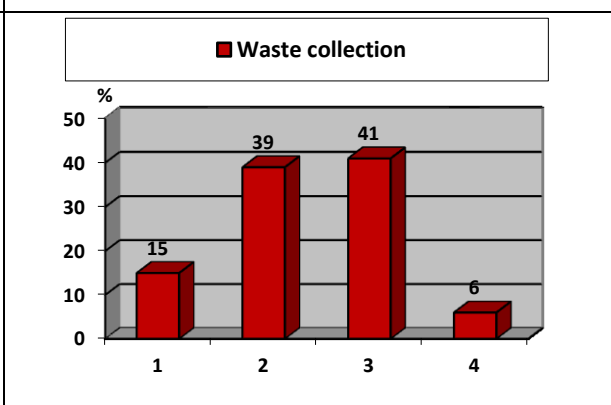
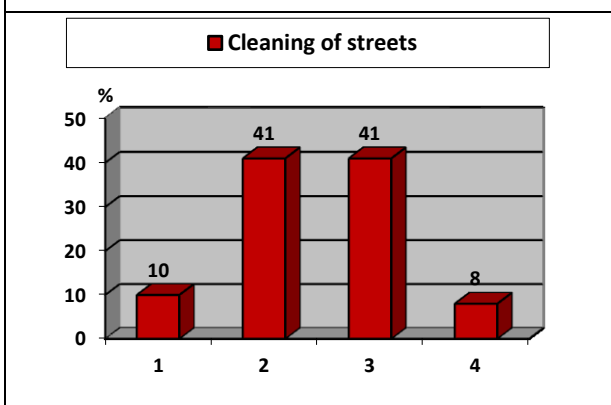
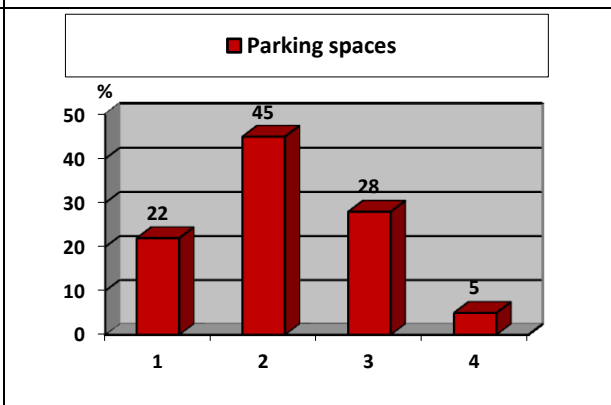
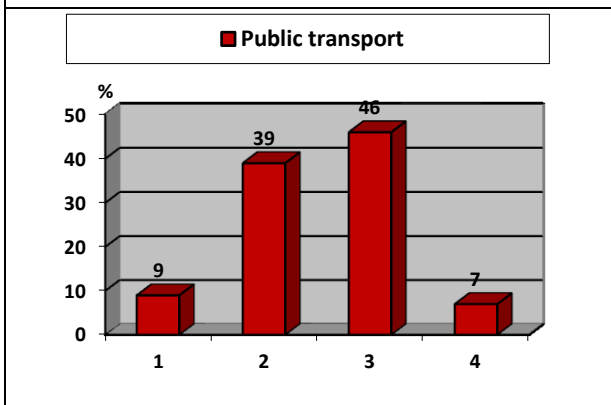
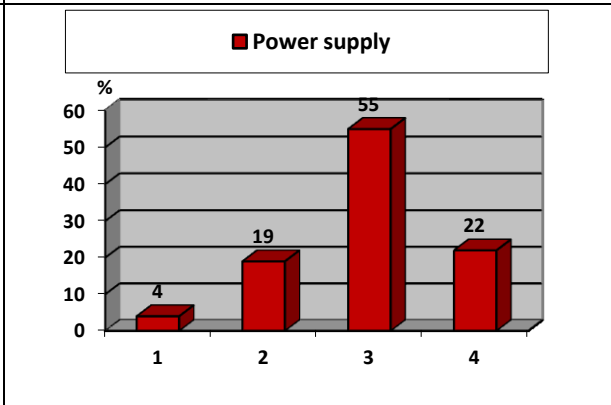
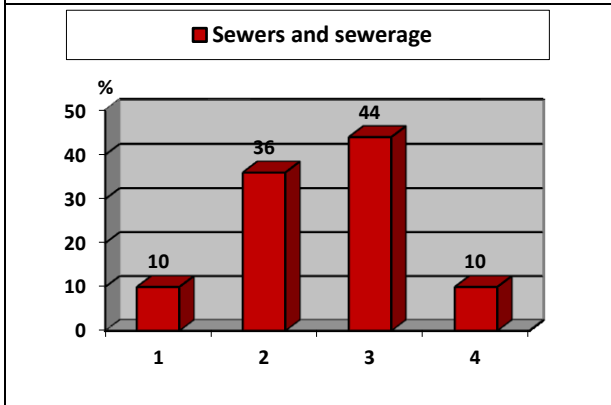
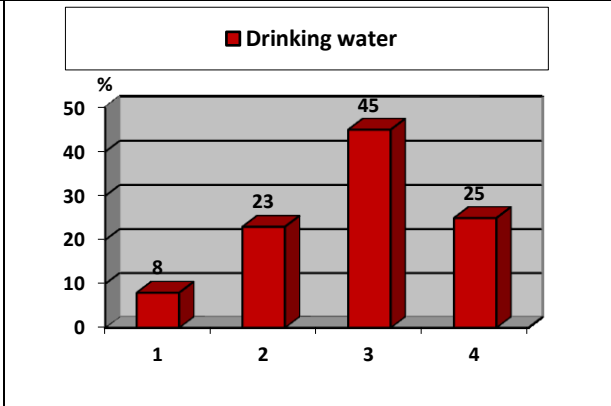
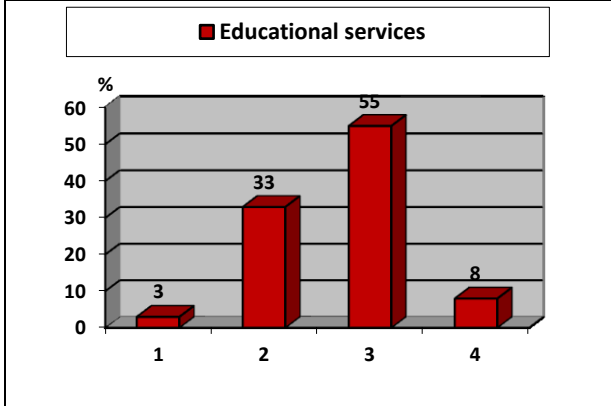
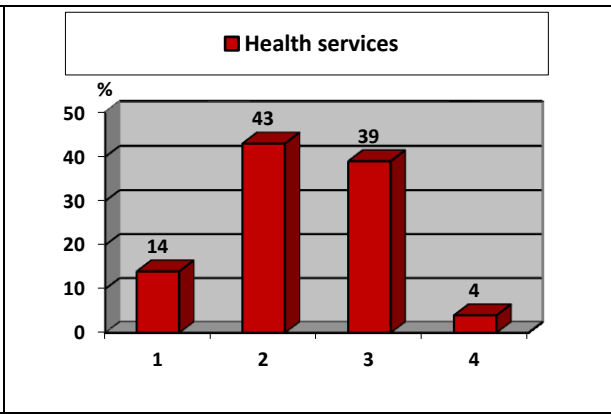
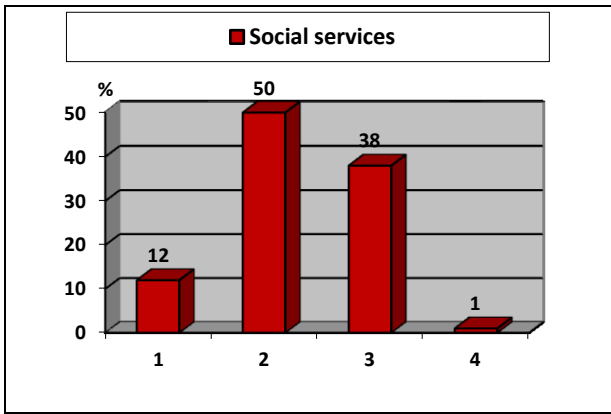


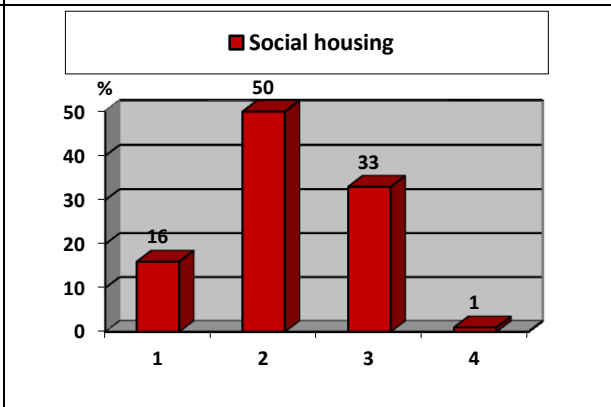
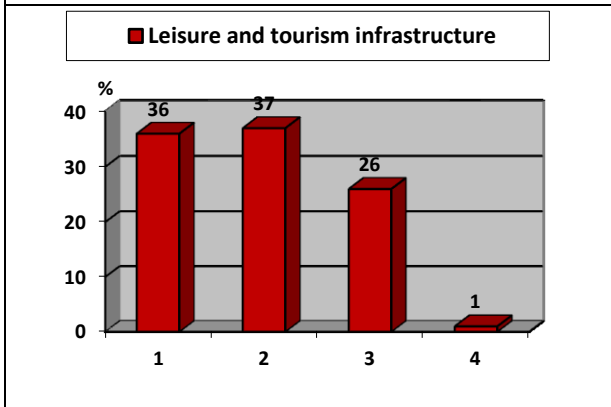
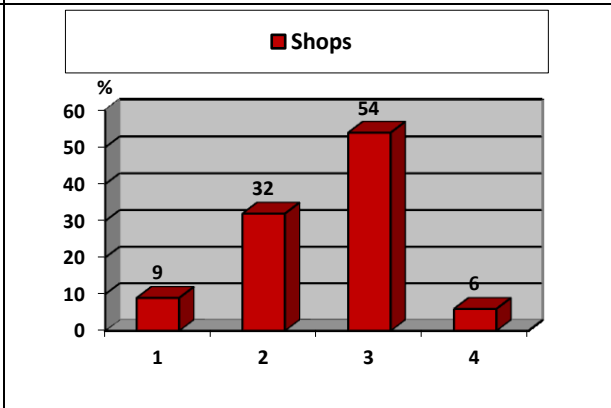
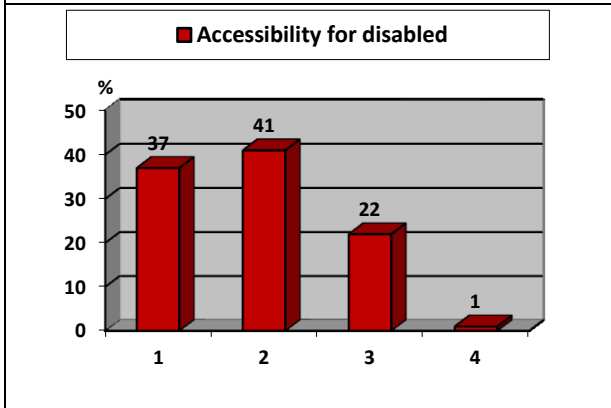
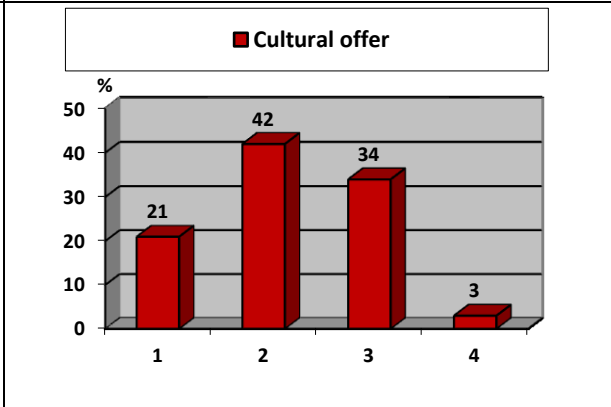
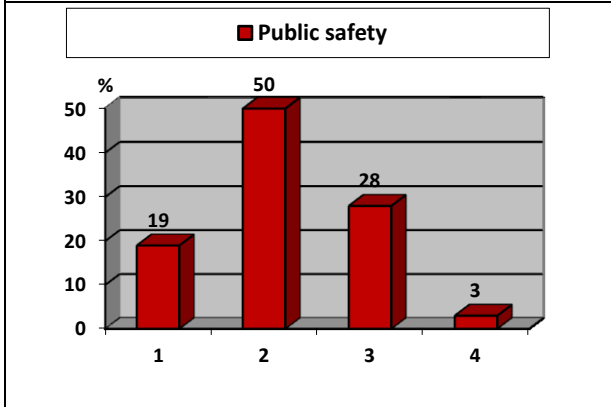
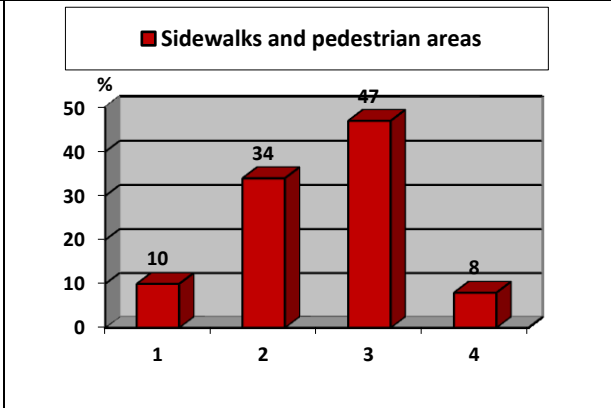
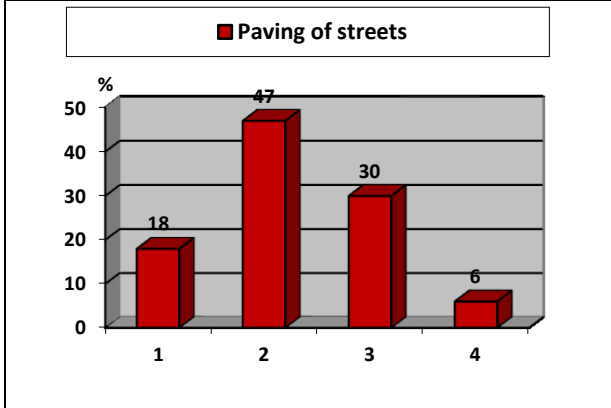
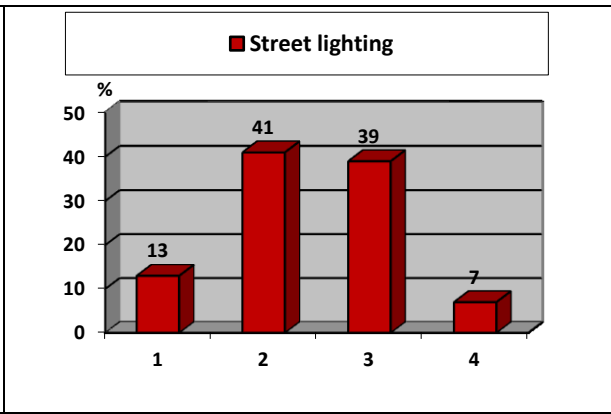
Assess the **quality** of the following services and facilities

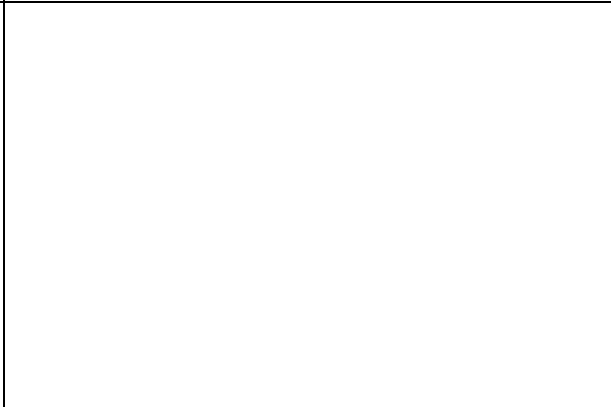
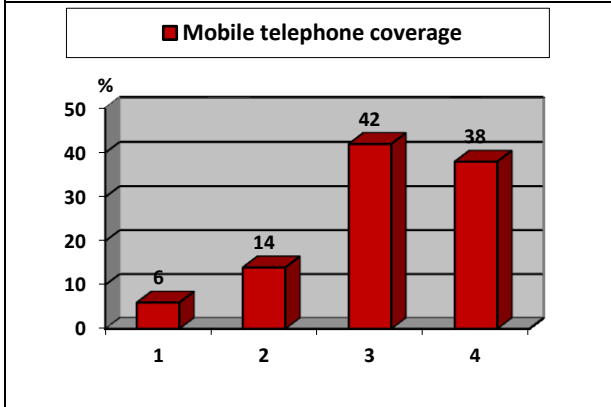
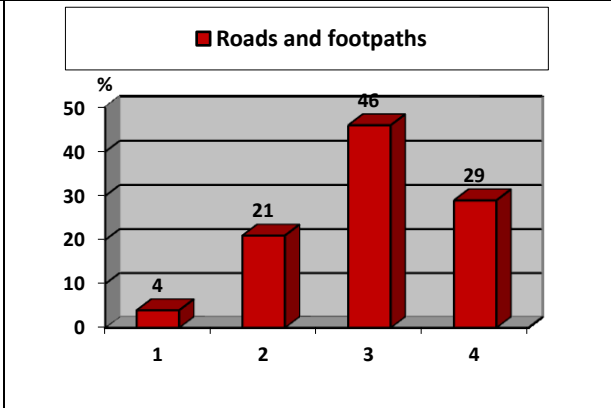
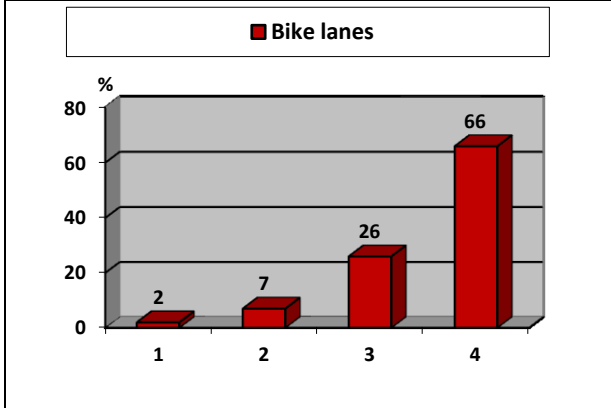
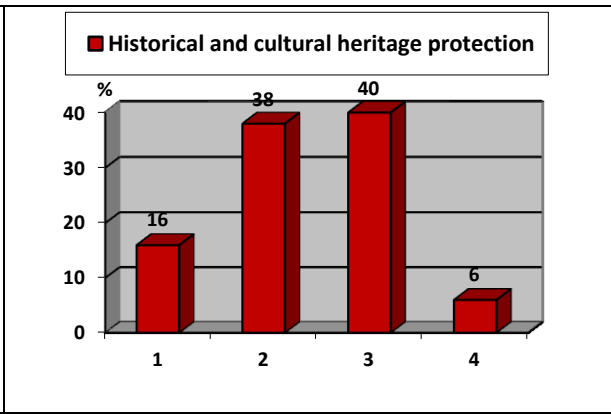
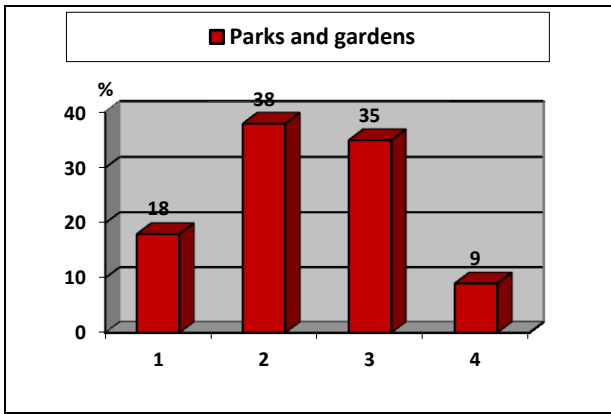
1-Low      2-Fair      3-Good      4-Very good      (values in percent)

	1	2	3	4
Activities for the elderly	28	43	28	2
Activities and meeting places for young people	46	29	22	3
Social services	12	50	38	1
Health services	14	43	39	4
Educational services	3	33	55	8
Drinking water	8	23	45	25
Sewers and sewerage	10	36	44	10
Power supply	4	19	55	22
Public transport	9	39	46	7
Parking spaces	22	45	28	5
Cleaning of streets	10	41	41	8
Waste collection	15	39	41	6
Waste selective collection to recycle	27	50	21	3
Street lighting	13	41	39	7
Paving of streets	18	47	30	6
Sidewalks and pedestrian areas	10	34	47	8
Public safety	19	50	28	3
Cultural offer	21	42	34	3
Accessibility for disabled	37	41	22	1
Shops	9	32	54	6
Leisure and tourism infrastructure	36	37	26	1
Social housing	16	50	33	1
Parks and gardens	18	38	35	9
Historical and cultural heritage protection	16	38	40	6
Bike lanes	2	7	26	66
Roads and footpaths	4	21	46	29
Mobile telephone coverage	6	14	42	38









How would you rate the **quality** of life in general in your district or city?

(values in percent)

1-Poor	2-Fair	3-Good	4-Very High
3	39	55	3

**Quality of life**

