



Education and Culture DG

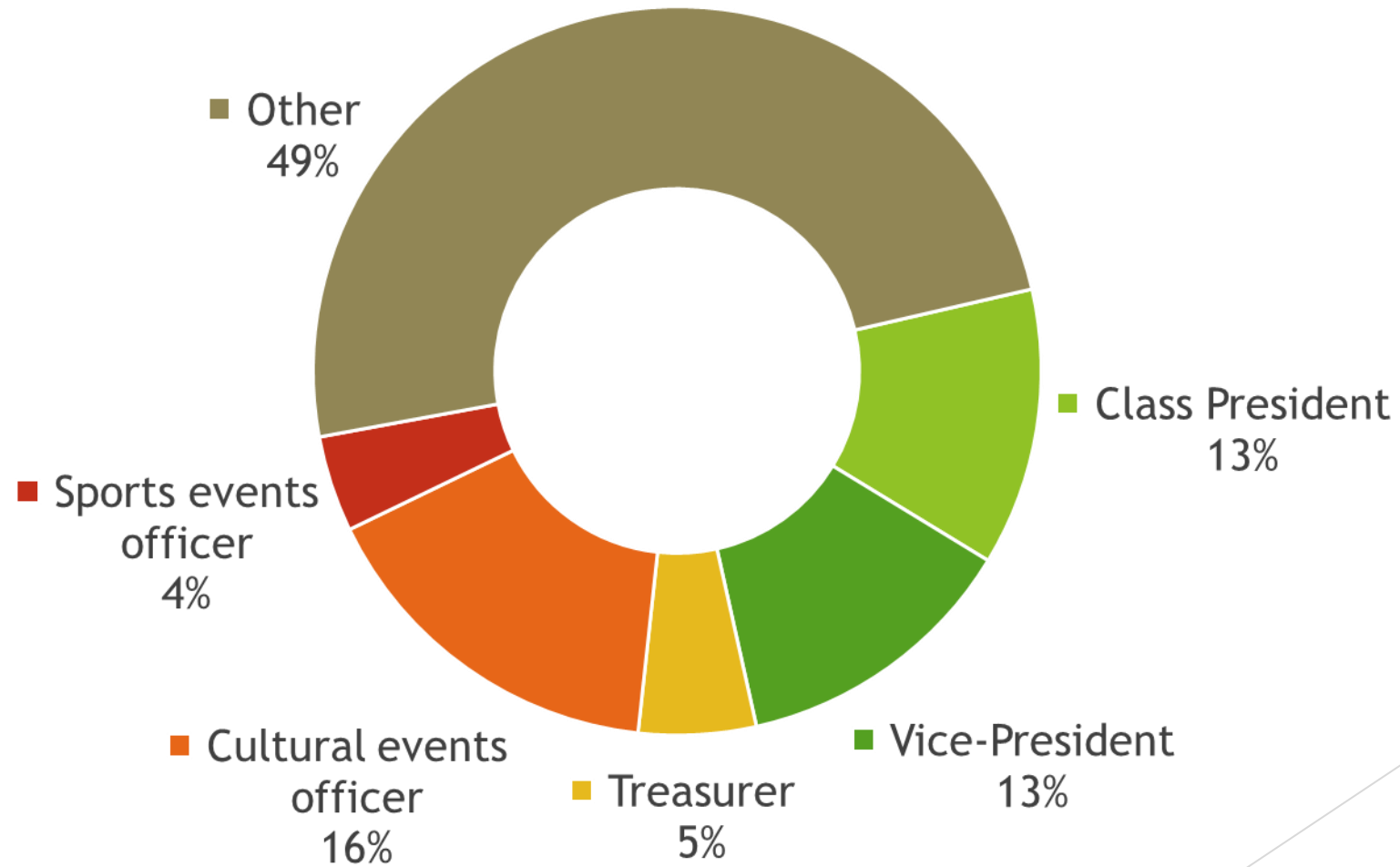
Lifelong Learning Programme

JONAVA SENAMIESTIS GYMNASIUM STUDENTS' PARTICIPATION IN school and municipality

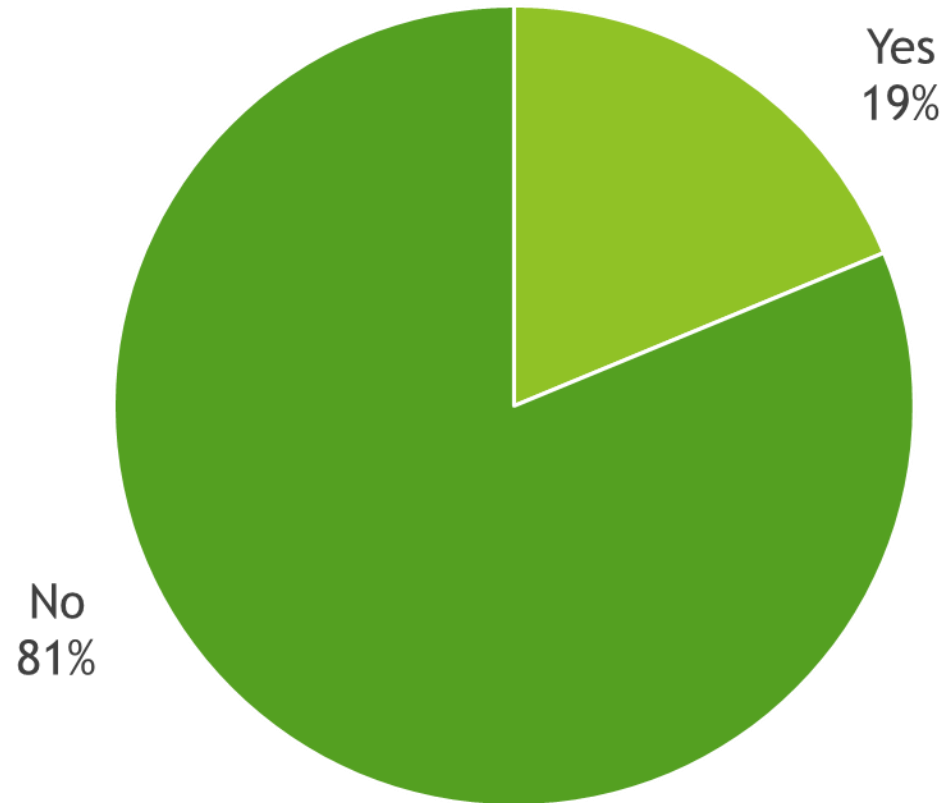
2014-01-29



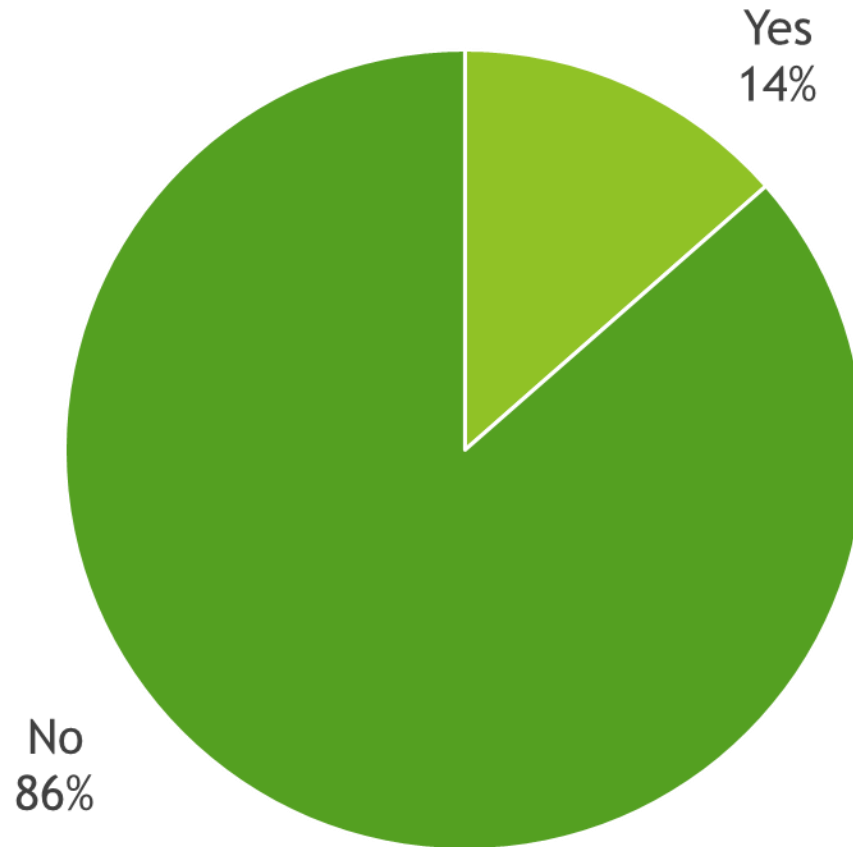
What responsibilities have you had in class?



Have you ever been a member of Student Council?



Have you ever participated in the activities of Lithuanian youth organizations?



What campaigns have you participated in?



What campaigns have you participated in?

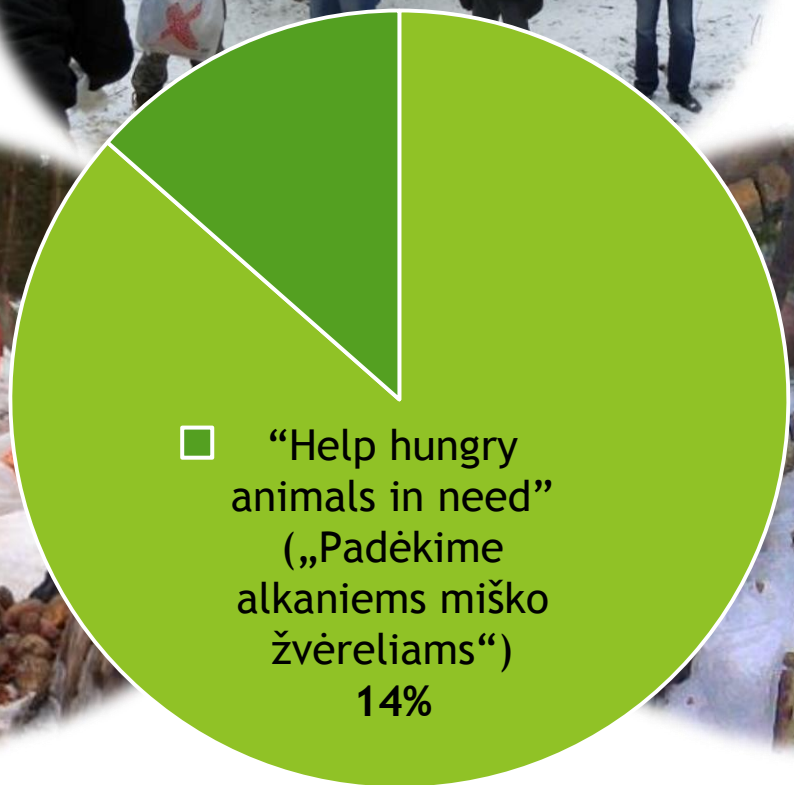
Maistobankas



“Food bank”
 („Maisto
 bankas“)
 25%



What campaigns have you participated in?



What campaigns have you participated in?



■ “Help stray animals”
(„Padēkime
benamiams
gyvūnams“)
12%

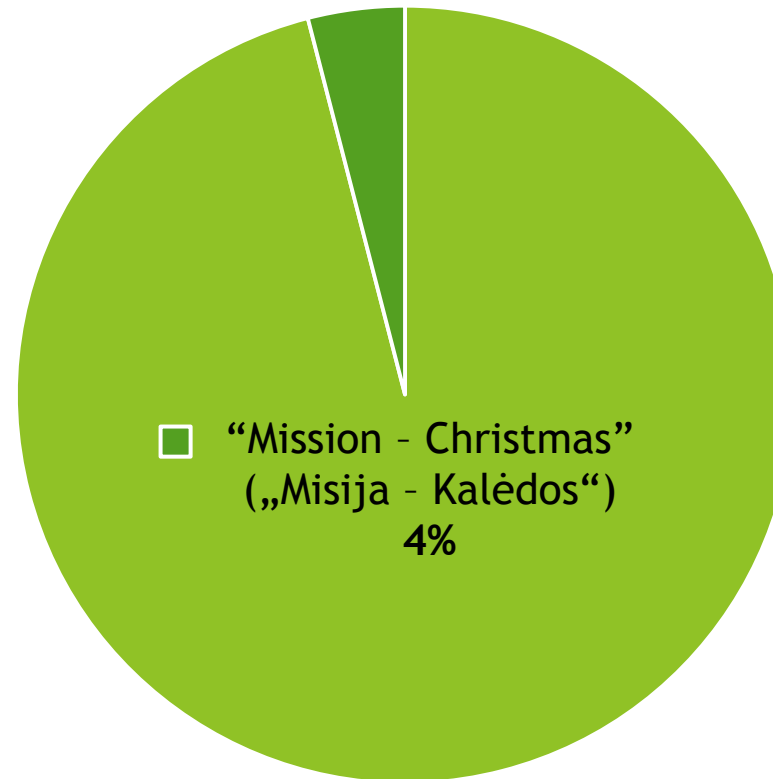
What campaigns have you participated in?



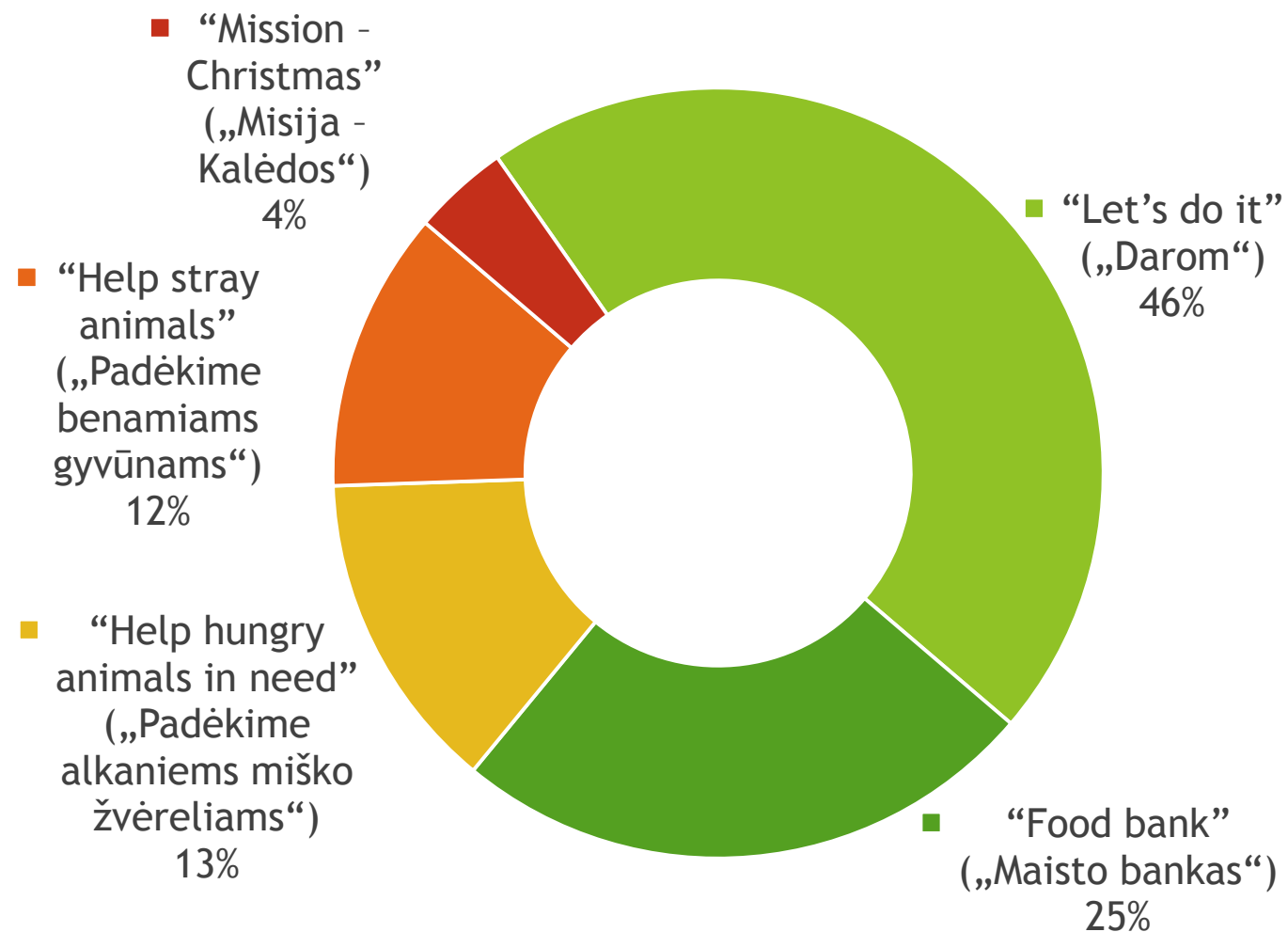
MISIJA - KALĖDOS

Jonavos labdaros ir paramos fondas "Gerumo sparnai" ir Jonavos Senamiesčio gimnazijos Comenius projekto „So Eco Green“ grupė kviečia visus mokyklos mokinius ir darbuotojus prisidėti prie gerumo akcijos „Misija – Kalėdos“. Ja siekiama paremti nepasiturinčias šeimas, kurioms trūksta drabužių, žaislų, mokyklinių reikmenų, maisto produktų.

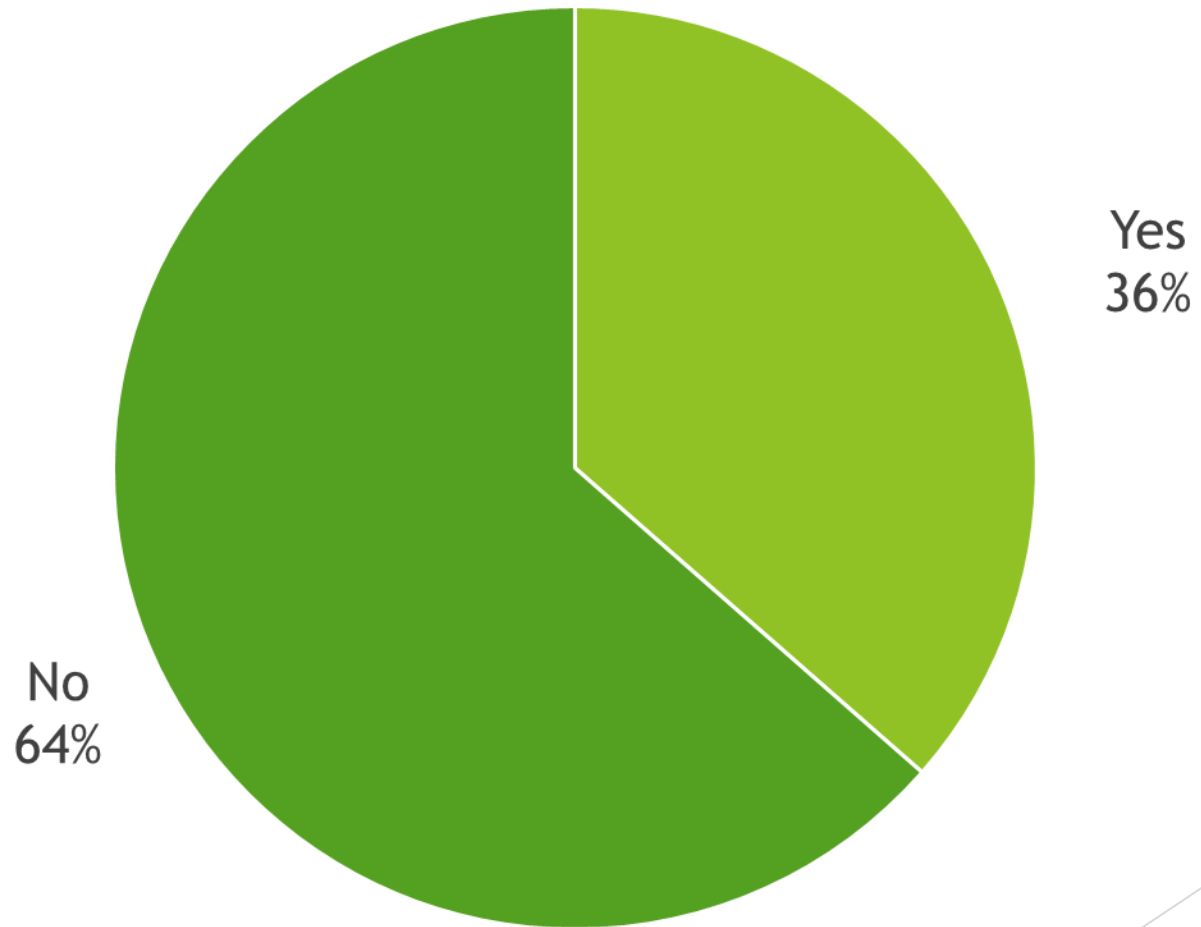
Dovanokime gerumą vieni kitiems.
Akcija vyks gruodžio 9 -13d. Daiktus ir maistą atnešti į 229 kab.



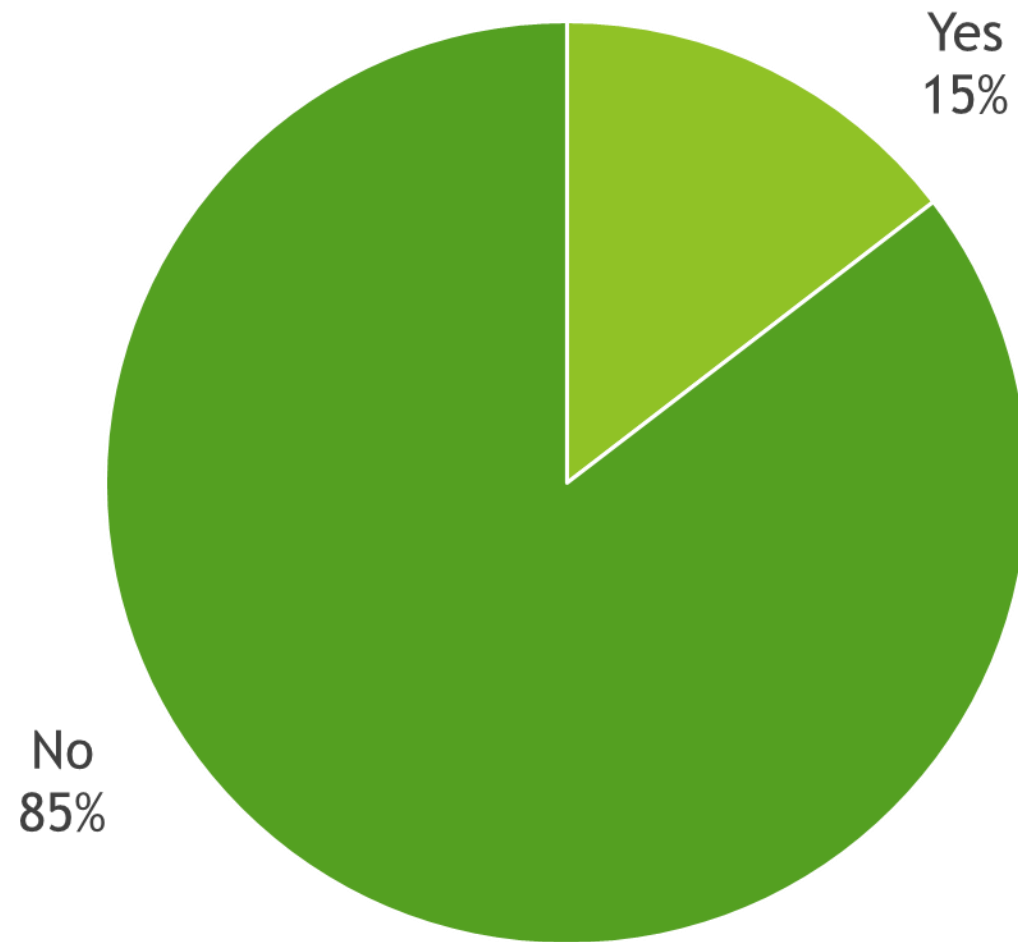
What campaigns have you participated in?



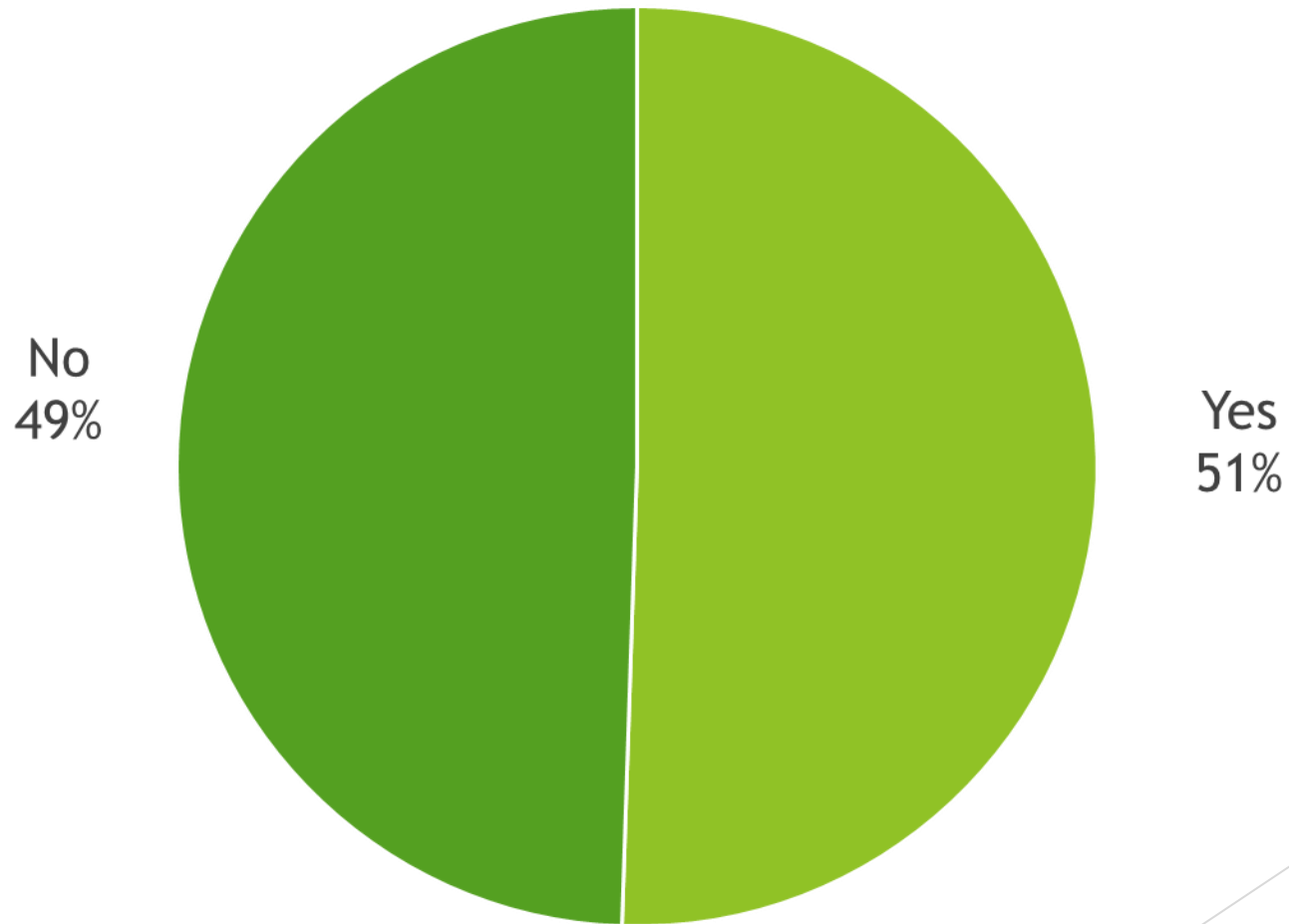
Have you ever volunteered?



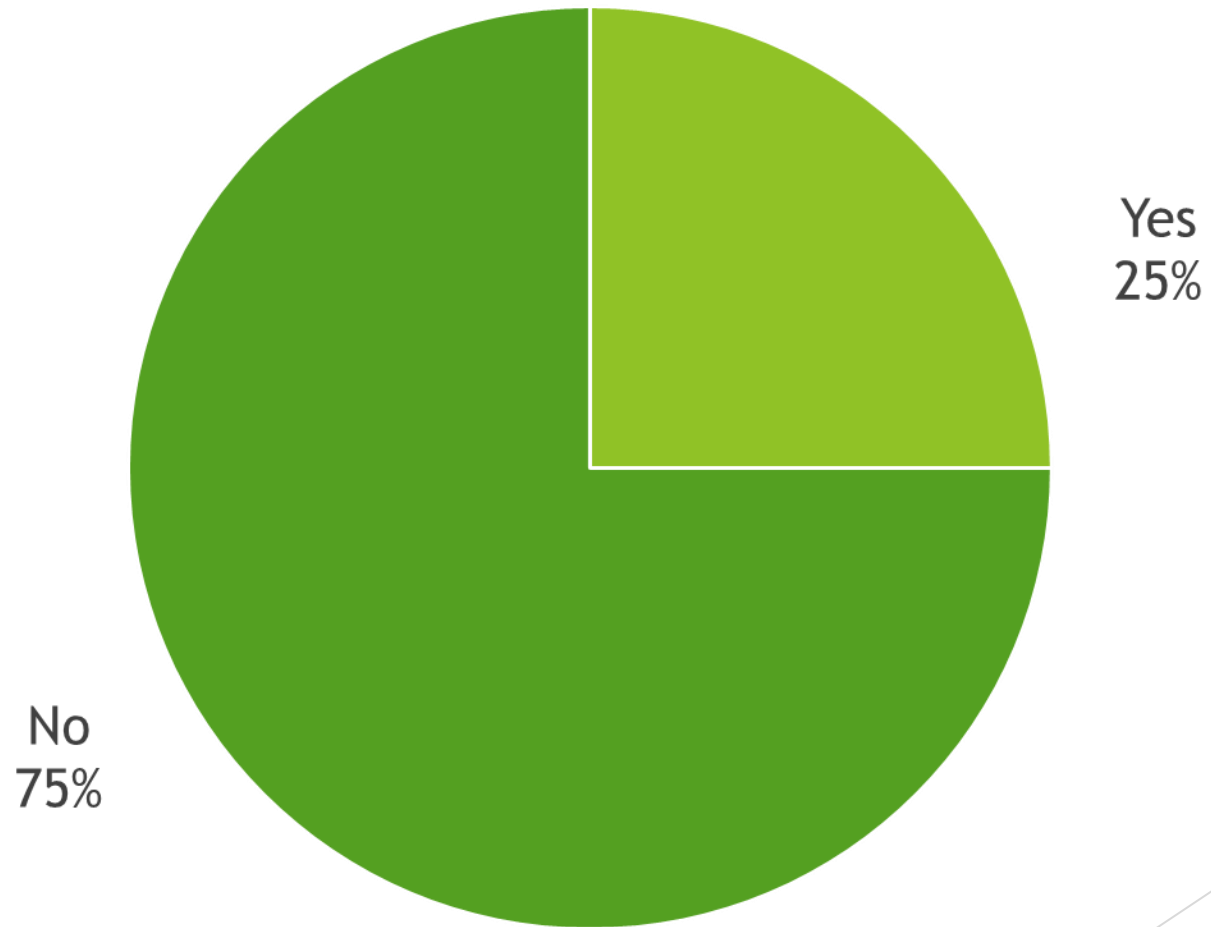
Have you ever participated in TV charity events?



Have you ever provided help for children's homes, old people's homes and other members of the community?



Have you ever organized events at school or in the community?



Conclusion

All things considered, it's obvious having done the research of the survey certain issues have emerged.

- 1) Our students are quite active in participating in some activities (e. g. “Let’s do it”, “Food Bank”)
- 2) Our self-governing groups are very initiative and organizing events at school, district and country.
- 3) There are some areas to be improved (e. g. “Mission - Christmas”, “Help stray animals”)

Thank you for your attention.

The background features abstract, overlapping geometric shapes in various shades of green, ranging from light lime to dark forest green. These shapes are primarily located on the right side of the slide, creating a modern, layered effect. The rest of the slide is a plain white background.